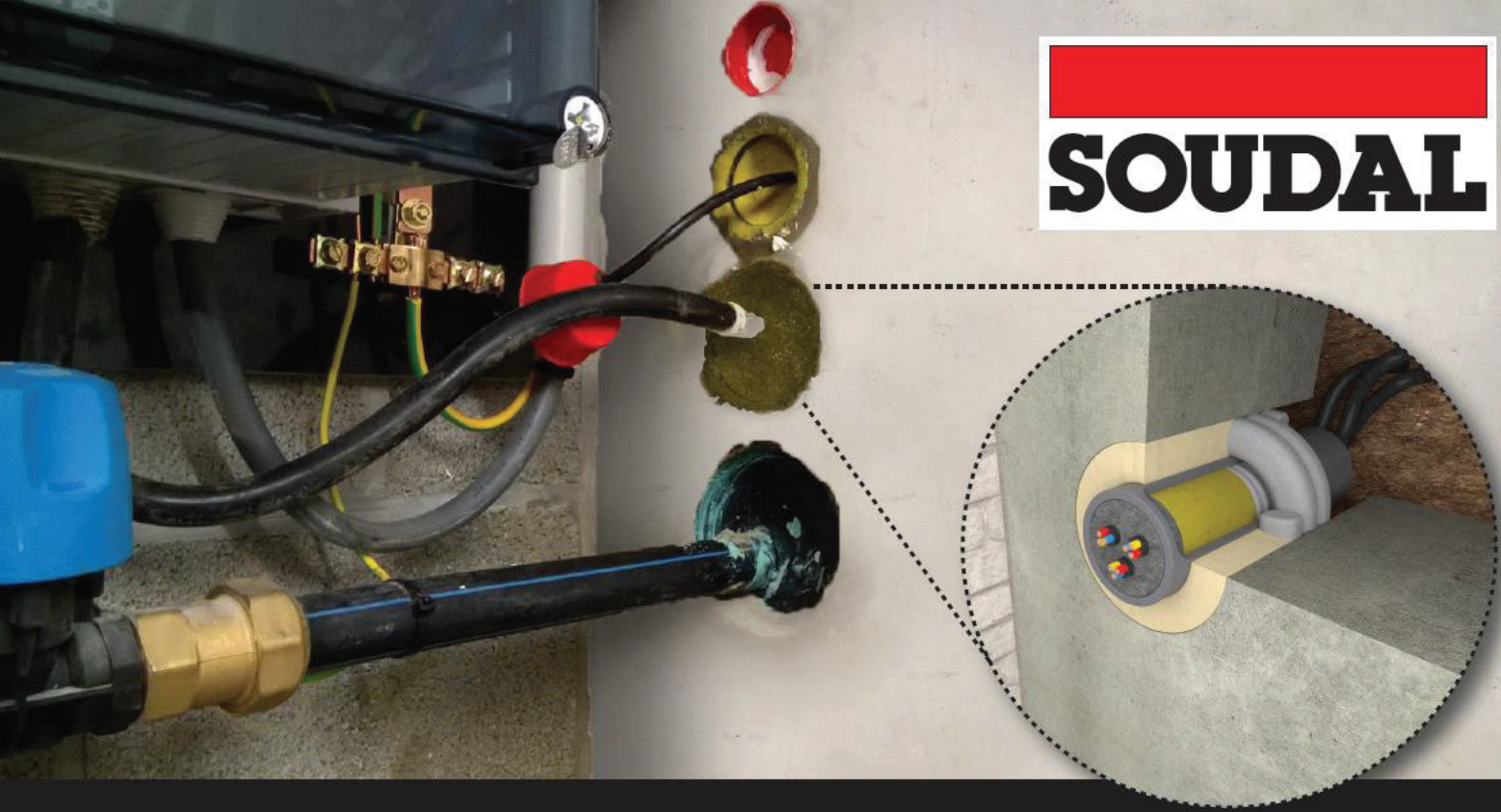
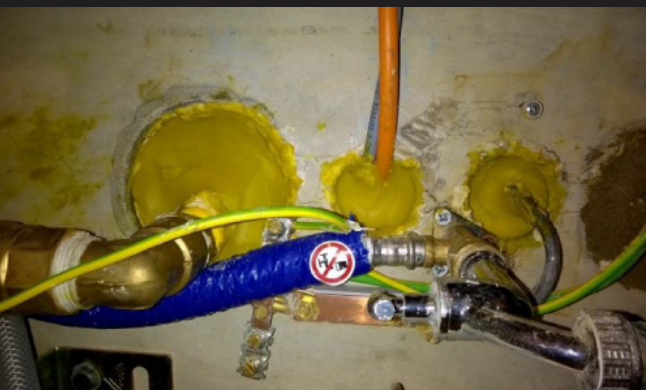


SOUDAL



WATER-TIGHT and GAS-TIGHT sealing
in and around pipelines and cable penetrations



SOUDAL

SOUDAL CONSTRUCTION CHEMICALS

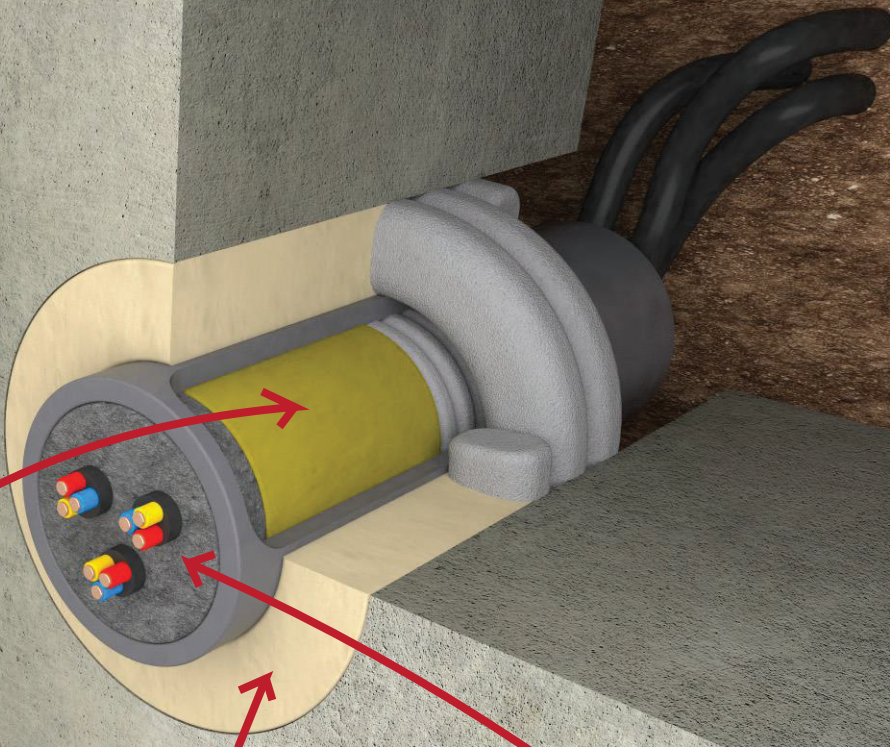
APPLICATION STEPS

1. In the case of large spaces between the pipe and the inner walls, one or more back fillings are required. Use back padding to create the application depth of Aquaswell and Soudapack WST.
Application depth: min. 12 cm

2. Apply Aquaswell on the outside for a water- and gas-tight seal around the cable and pipe penetrations.
Density: 1.37 g / ml
Application depth: min. 5 cm

3. Use Soudapack WST on the inside for flexible water and gas tight sealing inside cable and pipe penetrations.
Density: 1.2 - 1.5 g / ml
Application depth: 10 cm

4. Finish with Soudaplug ST for a nice and waterproof finish inside the penetration. Mix 0.20 - 0.25 litres of water to 1 kg of powder.
Application depth: 2 cm



SOUDAPACK WST



Hydro Swelling Sealant *Sealing inside of penetration*

SOUDAPACK WST is a one-component, solvent-free, hydro-swelling sealant to prevent water leaks in the inside of pipes. SOUDAPACK WST does not cure but remains permanently flexible, allowing additional cables or pipes to be installed.

- Immediate seal of leaks
- No adhesive layer needed
- Permanently flexible
- No vapors, no solvents
- Swells in contact with water
- Water-impermeable
- Water, water vapor, and gas-resistant up to 3 bar
- Does not harden
- Sustainable - Environmentally
- Easy to apply with a caulking gun

AQUASWELL



Hydro Swelling Sealant *Sealing exterior of penetration*

SOUDAL AQUASWELL is a one-component high-quality polyurethane sealant that swells in contact with water, developed for water-tight and gas-tight sealing on the exterior of pipe penetrations.

- Waterproof up to 5 bar
- Gas-tight up to 5 bar
- Excellent adhesion
- Swells up to max 450% in contact with water
- Easy to apply with a caulking gun
- Remains elastic after curing
- Retains original shape after contact with water is gone

SOUDAPLUG ST



Fast-Setting Mortar *Sealing inside of penetration*

SOUDAPLUG ST is a cement-based powder that can be mixed with water to create a waterproof mortar / coating. It ensures an effective, watertight seal of the concrete or masonry on the inside of the pipe duct, even under high pressure.

- Fast setting hydraulic mortar (fast cement)
- Hardens under water
- Definitive solution
- Stops flowing water directly; no injections needed
- Easy to apply
- Free of chlorides
- Non-corrosive to reinforcing steel