

**SOUDAL**

# SOUDAGUM **HYDRO**



## PROTECTIVE **WATERPROOF** COATING

Strong in Sealants, Adhesives and PU Foams

# APPLICATIONS

**SEALING AND/OR PROTECTION OF INTERIOR AND EXTERIOR JOINTS, GAPS, CRACKS AND CONNECTION AREAS.**



• Metal- and plastic roof gutters



• Protection against corrosion on lead and zinc



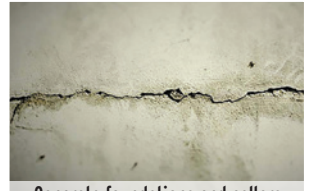
• Roof terminals



• Roof tiles and -edges



• Subterraneous garden poles



• Concrete foundations and cellars



• Skylights



• Chimneys



• Coating below terraces

Others: Ornaments, flower boxes, caravans and boats, gaps and cracks in roof materials and timber constructions

# SUBSTRATES



• Timber



• Metal Skids



• Concrete



• PVC



• Glass



• Zinc

Other substrates: Screed, ceramic materials, brick, copper, ABS and aluminium

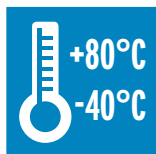
## RECOMMENDATION

We always recommend executing a preliminary adhesion test. Application temperature is between +5°C and +35°C. Please consider that the drying time is influenced by environmental factors (temperature, humidity, ....)

# CHARACTERISTICS

Soudagum Hydro is a single-component, water and solvent free waterproof coating for horizontal and vertical surfaces.

Available in buckets of 5kg and 10kg



Resistant to temperatures from -40°C until +80°C



Waterproof



Withstands rain 2 hours after application



FAST DRY

Fast drying time



Seals and Fills cracks



Free of solvents and isocyanates



Can be painted



Resistant to UV and all weather conditions

# APPLICATION STEP BY STEP

**1** Substrates and preparation: Substrates need to be clean, stable, and free of dust and grease. Remove all traces of previous protective coating materials.

**2** Stir Soudagum Hydro thoroughly in the original bucket.

**3** Apply the coating with a roller or a brush layers to achieve a thickness after drying of 2mm approximately. Wait with the application of the second layer until the first layer is completely dry.

## YIELD

Ca 1.4kg/m

Ca 2.0kg/m

## RECOMMENDATION

The Soudagum Hydro membrane can be reinforced with a fleece. We recommend placing the fleece (110g/m<sup>2</sup>) between the two layers. Insert the fleece into the first layer immediately after its application when it is still liquid. There should be an overlap of the fleece of between 3cm and 5 cm.



# SODAL

## SODAL CONSTRUCTION CHEMICALS



For more information on other products, please go to  
[www.sodal.com.sg](http://www.sodal.com.sg)