

SOUDAL



THE ULTIMATE SEALANT & ADHESIVE



MADE IN BELGIUM

**SEALS & BONDS ALMOST ANYTHING
ADHESIVE STRENGTH UP TO 400 KG**

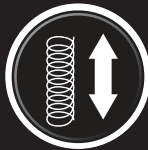


The FIX ALL range of products from Soudal are the perfect answer to all interior and exterior bonding, filling, and sealing jobs. Use on porous, non-porous, wet and humid surfaces - even underwater!

- Extremely high bond strength* - up to 320 kg / 10 cm²!
- Extreme initial tack* - holds up 400 kg / m² after 2 seconds!
- Impervious to water, weather, UV* - holds up, rain or shine!
- Permanent elasticity* - can be used as sealant



SUPER STRONG



REMAINS FLEXIBLE



BONDS ON ANY SURFACE



WEATHER RESISTANT



U.V. RESISTANT



CAN BE OVERPAINTED



LOW VOC / EMISSIONS

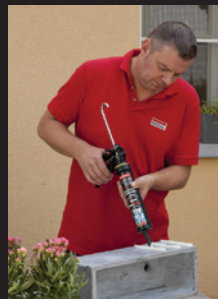


WORKS UNDERWATER

FIX ALL - PERFECT FOR USE AS....

AN ADHESIVE

- Super strong - up to **320 kg / 10 cm²**!
- Extreme initial grab - up to **400 kg / m²**
- Load-bearing in as fast as **20 minutes**
- Invisible bonding of glass (Crystal)
- Remains elastic - accommodates movements where other rigid adhesives will crack
- Bonds to almost any material / surface - porous or non-porous, even uneven surfaces
- No primer needed in most applications
- Non-corrosive: suitable for mirrors / sensitive materials like polystyrene

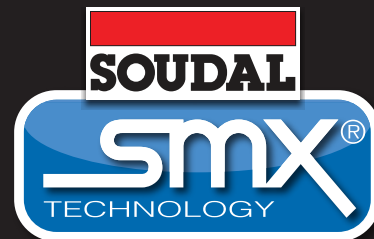


A SEALANT

- **Permanently elastic / flexible**
- Bonds to almost any surface
- High bond strength on substrates
- Seals any material, porous or non-porous
- Sanitary grade (Flexi, Crystal)
- Foodsafe (Crystal)
- Can be overpainted
- Can seal leaking / wet / damp surfaces
- Even works underwater!

WHY IT'S BETTER

- Based on Soudal's proprietary **SMX Hybrid Polymer Technology**
- Extreme resistance to rain, water, weather, oil, chemicals, sun, and UV
- Can be used for both interior and exterior
- Non-staining on porous substrates like natural stone and marble
- No smell, no solvents, no shrinkage
- Harmless to health, very low emissions, low VOC
- Works perfectly in almost all conditions, on almost all materials



Soudal's revolutionary SMX Hybrid Polymer technology takes the best technical properties of many chemistries and combines it into one breakthrough product.

This enhanced hybrid polymer technology is what our Fix All range is based on - and how they achieve their exceptional performance.

With its permanent, durable elasticity; excellent resistance; and unparalleled adhesive strength, Fix All easily outperforms most other construction adhesives and sealants.

SUITABLE MATERIALS

ABS	ACRYLIC (PMMA)	ALUMINIUM	BRASS	BRICK	CERAMIC	CONCRETE	COPPER	CORK
EPOXY	FIBREGLASS	GLASS	GRANITE	GYPSUM	LEAD	LIMESTONE	MARBLE	MDF
MIRROR	PLASTER-BOARD	PLYWOOD	POLYAMIDE	POLY-CARBONATE	POLYESTER	POLY-STYRENE	PORCELAIN	PVC
QUARTZ	ROCKWOOL	STEEL	STONE	TILES	TIMBER	TRAVERTINE	WOOD	ZINC

and more!



FLEXI



750%

Our most versatile product features great elasticity, combined with superb adhesive strength! Perfect for sealing joints and bonding stuff. With its added anti-fungal properties, Flexi is an uncompromising product for any application.

- PERFECT FOR ALMOST ANY APPLICATION
- Permanently elastic (750% elongation)
- Mould-resistant for sanitary applications
- Tested and conforms to ISO846 standard
- Non-staining on natural stone, marble etc
- Seals leaking / wet / underwater areas



MULTI USE

www.fixall.sg/flexi



TURBO



20min.

Our high strength adhesive can be used to bond heavy materials in as quickly as 20 minutes! Achieving such a strong bond in such a short time is no easy feat, but what's more impressive is in how long the bond lasts.

- FIXED AFTER 20 MINUTES
- Perfect for super-fast bonding
- Final strength after 3 hours
- Very high final strength
- High initial tack / grab
- BRL 3107 certified construction adhesive



SUPER FAST

www.fixall.sg/turbo



CRYSTAL



100% transparent

The 100% Crystal Clear sealant and adhesive for applications where looks matter. Great for bonding glass to glass, or anything requiring invisible sealing and bonding with a transparent product. Foodsafe.

- 100% CRYSTAL CLEAR
- See-through product - not cloudy or milky
- Permanently elastic
- Mould-resistant for sanitary applications
- Tested and conforms to ISO846 standard
- Food safe according to FDA specifications



SUPER CLEAR

www.fixall.sg/crystal



X-TREME POWER

400KG

The big brother of the FIX ALL Family. You can count on this adhesive to fulfill all your bonding requirements in the most simple ways. Its extreme initial tack means it can grab 400 kg/m² in seconds! Just apply, press, and let go; and heavy objects are held up immediately without sliding or dropping.

- EXTREME INITIAL TACK
- Grabs 400kg/m² in seconds
- Perfect for extreme bonding of heavy materials
- No need to support heavy materials
- No need to build support struts
- Very high final strength; achieved after 24 hours



EXTREME TACK

www.fixall.sg/xtreme



A sealant. And an adhesive. In one versatile product

Make it simple. You no longer need multiple products to do basic tasks. Soudal Fix All has all the elasticity, movement capability, water-proof properties, and weather resistance to function and excel as a sealant. Tested to FDA food-safe specifications and with anti-fungal properties, you can use it for almost every sealing application. But don't get mistaken that Fix All is only a sealant – with an adhesive strength of up to 320 kg per 10 cm², Fix All easily outperforms many other construction adhesives, and is equally capable of all sorts of heavy duty bonding.



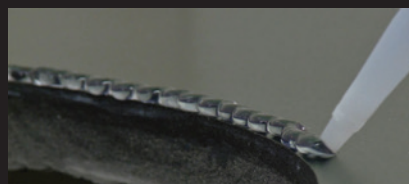
Use it anywhere – rain or shine. It'll hold up.

Water. Rain. Sun. Snow. These are all things that Fix All has no problem dealing with on a daily basis. Soudal's SMX polymer technology was developed to have superior resistance to all interior and exterior conditions, and Fix All has been tested and proven to have superb UV stability, imperviousness to water, and exceptional chemical resistance. No more worrying about whether a sealant will work in difficult conditions.



Waterproof. Water resistant. Even before full cure.

Sometimes, trying to fix a leak is all too difficult with traditional products. And the main reason for this problem is that a leaking area is constantly wet, disrupting adhesion. Step in Fix All. With its moisture-curing mechanism and further developments by Soudal, Fix All can bond easily to wet and humid surfaces, with little or no compromise in adhesion, forming a water-tight seal. In some extreme case-studies, Fix All has even been applied under the sea, and left to cure while immersed in seawater to excellent results.

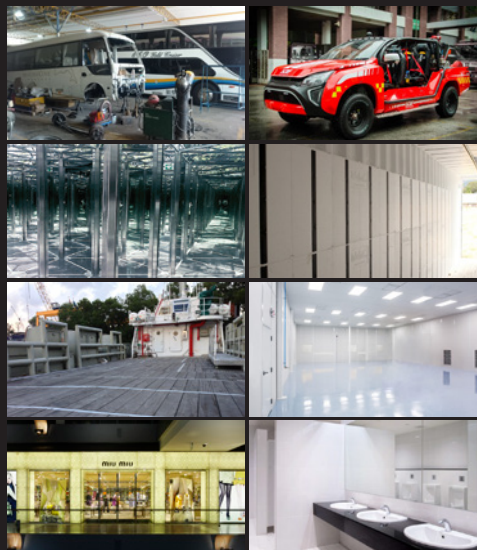


Health and environmentally friendly

Breathe easy. No strong acidic smells, or pungent, piercing solvents. No harmful chemicals or gases released. Halogen-free and isocyanate-free. Fix All is a bastion of light in an industry fraught with warning labels and danger symbols. Our SMX polymer moisture curing system is neutral and harmless to health and the environment, and is practically odourless. You can breathe easy knowing that this product works for you, with you.

Soudal FIX ALL has been used in Singapore for...

- Mirror bonding
- Cleanroom sealing
- Sealing of skylights
- Signage bonding & sealing
- Bonding of insulation panels
- Glass feature bonding
- Bonding of special canvasses
- Underwater sealing of canal joints
- Shipbuilding bonding and sealing
- Timber decking
- Musical instrument repair
- Sanitary sealing
- Sealing / bonding of vehicle parts
- Waterproofing / sealing of roofs
- Bonding military vehicle parts
- Bus construction bonding & sealing
- Bonding of cleanroom panels
- ...and many more!



TESTS / STANDARDS



KOMO CERTIFIED BRL 3107
CONSTRUCTION ADHESIVE



FOOD SAFE



FDA CFR 21 - 177.2600 (e)



ANTI-FUNGAL /
SANITARY GRADE

MANUFACTURED BY:



SODAL N.V.
Everdongenlaan 18-20,
2300 Turnhout, Belgium



www.soudal.com

DISTRIBUTED BY:



PFE TECHNOLOGIES PTE LTD
9 Gul St 4, Singapore 629238
www.pfe.tech

WWW.FIXALL.SG